

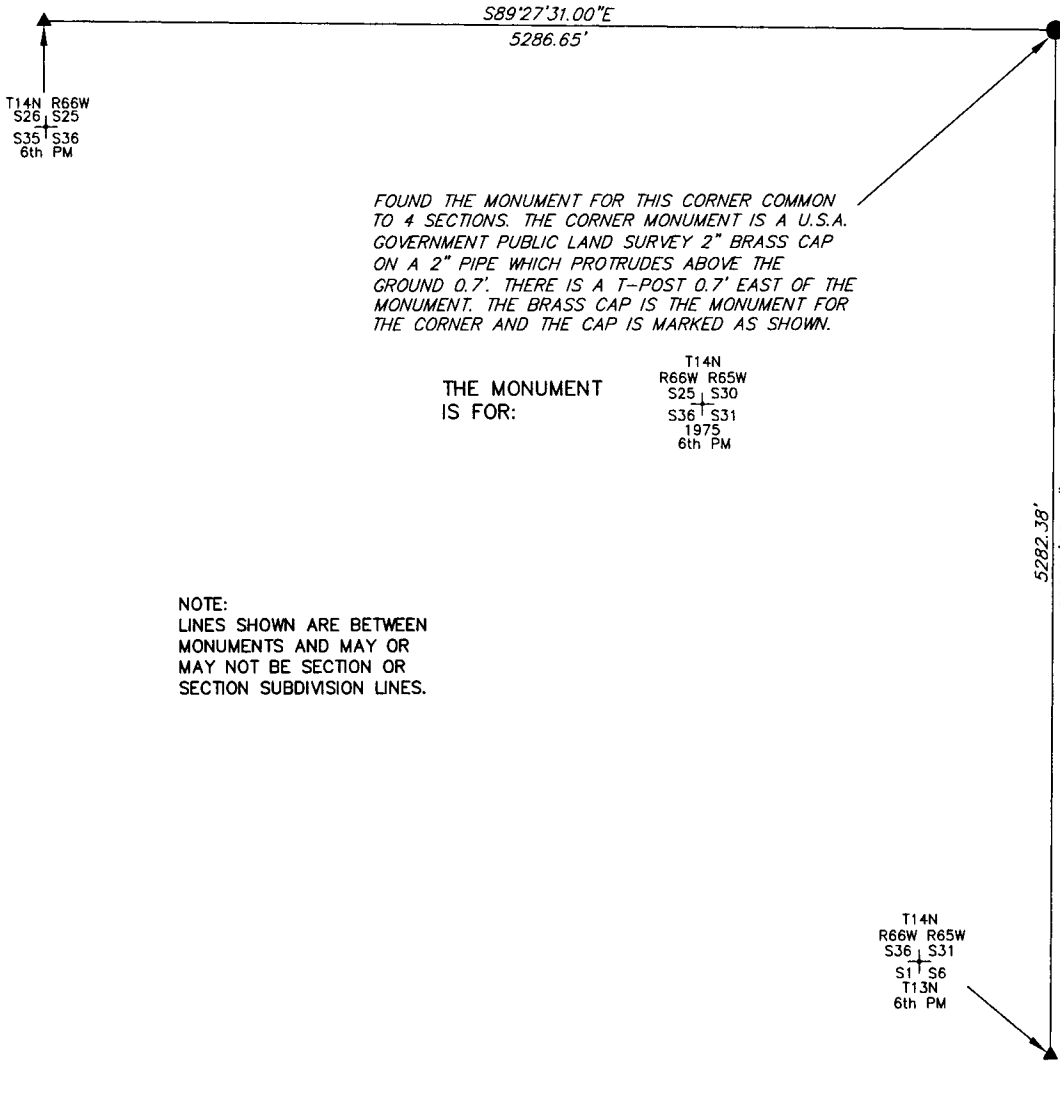
# State of Wyoming Corner Record

*CORNER PERPETUATION AND FILING ACT.*

Regulations of the Board of Registration for Professional Engineers and Land Surveyors.)

Reverse side of this form may be used if more space is needed.

Record of original survey and citation of source of historic information (if corner is lost or obliterated). Description of corner monumentation evidence found and/or monument and accessories established to perpetuate the location of this corner. Sketch of relative location of monument, accessories, and reference points with course and distance to adjacent corner(s) (if determined in this survey). Method and rationale for reestablishment of lost or obliterated corner.



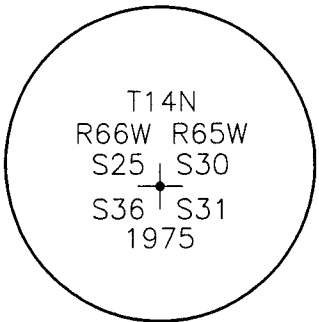
FOUND THE MONUMENT FOR THIS CORNER COMMON TO 4 SECTIONS. THE CORNER MONUMENT IS A U.S.A. GOVERNMENT PUBLIC LAND SURVEY 2" BRASS CAP ON A 2" PIPE WHICH PROTRUDES ABOVE THE GROUND 0.7'. THERE IS A T-POST 0.7' EAST OF THE MONUMENT. THE BRASS CAP IS THE MONUMENT FOR THE CORNER AND THE CAP IS MARKED AS SHOWN.

THE MONUMENT IS FOR:  
 T14N R66W R65W  
 S25 S30  
 S36 S31  
 1975  
 6th PM

NOTE:  
 LINES SHOWN ARE BETWEEN MONUMENTS AND MAY OR MAY NOT BE SECTION OR SECTION SUBDIVISION LINES.

T14N R66W R65W  
 S36 S31  
 S1 S6  
 T13N  
 6th PM

SCALE 1"=1000'  
 (EXCEPT IN TRIVIAL CASES)  
 BEARINGS ARE RELATED TO WGS 84 WITH GPS OBSERVATIONS  
 DRAWN BY: AM  
 P.C. L. PENCE  
 COUNTY: LARAMIE



CORNER MONUMENT SYMBOLS

- RECORD IS FOR THIS CORNER MONUMENT.
- ▲ A RELATED CORNER OR WC MONUMENT.

THE MONUMENT IS MARKED

Date of Field Work: 05/13/2010 Office Reference: \_\_\_\_\_

CROSS INDEX DIAGRAM

A	1	2	3	4	5	6	7	8	9	10	11	12	13	14	15	16	17	18	19	20	21	22	23	24	25	A
B																										B
C		6			5				4					3					2							C
D																										D
E																										E
F																										F
G			7			8			9			10			11				12							G
H																										H
J																										J
K																										K
L			18			17			16					15					14							L
M																										M
N																										N
O																										O
P			19			20			21					22					23							P
Q																										Q
R																										R
S																										S
T			30			29			28					27					26							T
U																										U
V																										V
W																										W
X			31			32			33					34					35							X
Y																										Y
Z																										Z

Firm/Agency, Address

UELS, LLC  
85 South 200 East  
Vernal, Utah 84078  
 Telephone Number: 435-789-1017

This corner record was prepared by me or under my direction and supervision.

SEAL & SIGNATURE



RECORDED 12/08/2011 AT 1:19 PM REC# 581079 BK# 2249 PG# 405  
 EBRA K. LATHROP, CLERK OF LARAMIE COUNTY, WY PAGE 1 OF 1